



# BONAIRE®

The leaders in heating and cooling

## Air Conditioning Product Range

FEATURING THE ALL NEW  
**NAVIGATOR**  
CONTROLLER





## Contents

- 3 Welcome to Bonaire
- 4 Choosing the right cooling system for your home
- 6 Bonaire Evaporative Air Conditioning
- 9 The Bonaire Evaporative Range
- 10 A choice of controllers
- 11 Bonaire Durango Evaporative Window Air Conditioner
- 12 Bonaire Inverter Reverse Cycle Air Conditioning
- 14 Bonaire Inverter High Wall Split System Air Conditioning
- 16 Bonaire Inverter Dual Cycle Refrigerated Air Conditioning / Gas Heating Systems
- 17 New homes and renovations with Bonaire
- 18 Specifications

## Welcome to Bonaire

As Australia's leading heating and cooling brand, Bonaire has been providing homes with state-of-the-art, efficient heating and cooling systems for over 60 years. Using proven technology we create intelligent, user friendly systems that maximise energy efficiency and reduce operating costs. We constantly strive to ensure that the Bonaire name is synonymous with quality and innovation and this is what continues to drive the company today.

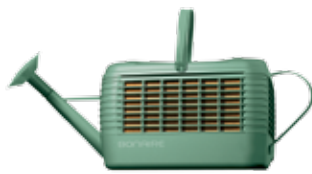
## The Bonaire mission

Our mission is to deliver the most advanced range of whole-of-home heating and cooling solutions to fit today's modern lifestyles.

## Bonaire quality

At Bonaire we place enormous importance on continually improving design, engineering and manufacturing processes and every one of our products is manufactured to the highest possible standards using premium quality materials. All Bonaire units are quality tested before they leave our factory, and are supported by a carefully selected dealer network that is committed to customer satisfaction.

We are proud that Bonaire is Australian owned with world class manufacturing facilities in Adelaide SA and Leeton NSW being the foundation of the business.



Saves water



Saves on running costs



Saves the environment



Cools your whole home



# Choosing the right cooling system for your home

There's nothing quite like walking into the cool surrounds of your home and escaping the blistering summer heat outside. When you consider that cooling accounts for a large proportion of household's energy costs over summer, it's so important to select the right cooling methods for your home. The wrong choice can prove both costly and uncomfortable.

## Whole-of-home cooling vs room cooling

The most important choice you have to make is whether you need to cool separate rooms or your whole home.

### Room cooling

If you only need to cool individual rooms in your home, then a refrigerated high wall split system is the way to go.

Refrigerated high wall split systems consist of a condensing unit installed on the outside of your home, and a wall mounted unit inside your home, which artificially cools the air through indoor and outdoor coils connected by pipes carrying refrigerant gas.

Bonaire also offers a low cost and easy to install option – a window mounted fresh air room evaporative cooler.

### Whole-of-home cooling

When it comes to cooling your whole home, you have the choice of two main systems: ducted refrigerated systems and ducted evaporative systems.

The ducted refrigerated systems work on the same principal as the split room systems, with an indoor and outdoor coil. Traditionally you'll find these systems work on a day/night zone system which lets you cool the living areas of your home during the day and cool the sleeping areas at night.

Ducted evaporative coolers, on the other hand, use fresh air to cool all rooms of your home at the same time. Fresh air is drawn from outside your home through the water moistened filters, which cools and cleans the air. The cool, fresh air is then circulated through the ducts, forcing stale air out through open windows and doors. This natural cooling process has low installation, low running costs, low noise and low greenhouse emissions, and is ideal for asthma and hay fever sufferers. All rooms in your home are cooled at the same time.

### Some important questions

- In a long hot summer, will I be comfortable just cooling one or two rooms?
- Do I want the comfort of having every room cooled?
- Should the purchase price be my biggest consideration?
- Do I need cooling all day or for short periods of time?
- Should I think about running costs?
- Will noise bother me or my neighbours?
- Does anyone in my house suffer from asthma or hay fever?





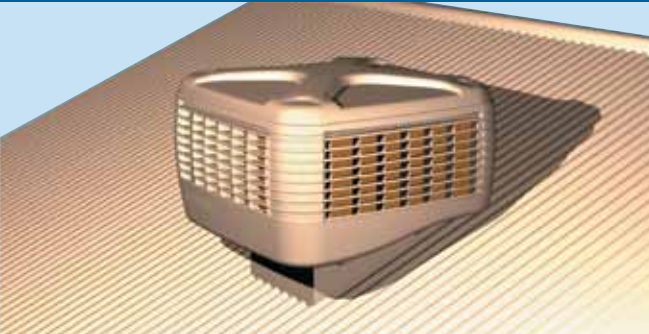
# Bonaire Evaporative Air Conditioning

An evaporative cooling system is simply the most cost effective and quietest way to cool your home. For over 50 years Bonaire have been providing Australians with innovative, efficient evaporative cooling systems. Today we continue to draw on the latest technology to create intelligent, environmentally and user friendly cooling systems that maximise energy efficiency and minimise expense to your pocket.



Naturally cooled, evaporative air conditioners circulate fresh air throughout your entire home. Hot, stale air is forced out.

The quickest, quietest and most efficient way to cool your whole home



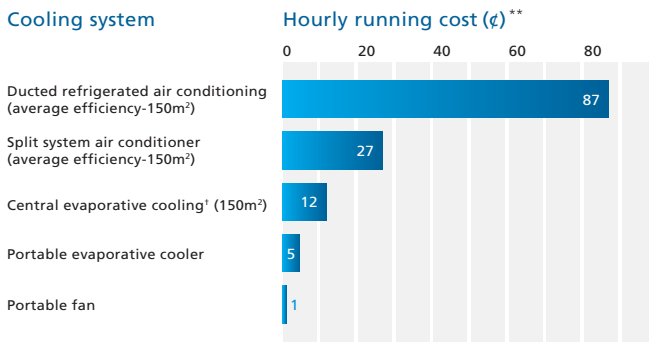
The low profile Bonaire EAC

### Evaporative air conditioning

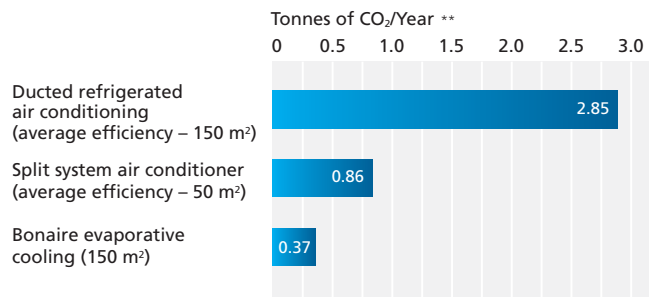
When it comes to the most efficient and economical way to cool your whole home, you can't go past evaporative cooling. Economical to buy and to run, it is the most cost efficient and quiet way to stay cool this summer.

### Save on running costs and reduce your energy bills

A Bonaire Ducted Evaporative System is the most efficient way to cool your whole home. The graph below shows that cooling your whole home with a Bonaire evaporative cooler is up to 87% cheaper than a comparable ducted refrigerated system.



\*Subject to a maintenance service call in the third year.  
\*\*SEAV, 'Operating costs of electrical appliances' Nov 2002.



\*Compared to a conventional ducted evaporative air conditioning system with manual bleed. Actual water saving depends on geographical location and unit size.  
\*\*SEAV Victoria "Choosing a cooling system" Nov 2002.

### Why choose Bonaire Evaporative Cooling?

- Low running costs. Cool your whole home up to 87% cheaper than other air conditioners
- Low energy consumption = reduced electricity bills
- Envirowing™ Fan – maximises efficiency
- Patented Hushdrive motor technology for quiet operation
- Aquamiser™ system – minimises water usage
- Environmentally friendly, producing less than 15% of the CO<sub>2</sub> greenhouse gases produced by a standard ducted reverse cycle system (refer to the graph below)
- Models to suit any home size or budget
- Easy installation
- Designed and built for Australia's harsh environment
- Large CELdek pads, unlike some competitor units, for maximum cooling efficiency
- Circulates only fresh, clean, naturally cooled air throughout your home – doors and windows are left open
- Filtered air is soft and gentle on nose, eyes, and skin. Ideal for asthma and hayfever sufferers
- More cost-effective to install and run than comparable ducted refrigerated units
- Helps eliminate smoke and cooking odours
- Indoor plants thrive on fresh air cooling
- Helps reduce the spread of infections
- Unique 'Bonres®' Unit Selection System
- Adds value to your home
- 3 years parts and labour warranty standard
- 10 year structural warranty (parts only)
- 25 year corrosion warranty on the cabinet (parts only)
- Integra 3 year plus 2 year extended parts and labour warranty standard\*
- Australian made and owned
- Pioneers in evaporative cooling in Australia
- Injection moulded cabinets
- All four CELdek® pads are equal in size for optimum cooling

### Bonaire is the environmentally friendly cooling option.



### Bonaire conserves water and helps save the environment

As water conservation becomes more and more a priority for Australians, Bonaire have a number of water saving technologies that will ensure water usage is kept as low as possible.

### New Bonaire Aquamiser™ Water Conservation System\*

This clever and reliable device is designed to automatically minimise the water usage of the evaporative air conditioner while still ensuring that the system has the correct amount of fresh water to guarantee efficient operation.



### Helps save the environment

If you're concerned about the environment, choose a Bonaire Evaporative Cooling System. Our evaporative 'whole-of-home' system produces less than 15% of the CO<sub>2</sub> greenhouse gases produced by a comparable ducted reverse cycle refrigerated system.

By using Bonaire Evaporative Air Conditioning, you can reduce your impact on climate change. Evaporative air conditioning produces less black balloons of green house gas than 'whole-of-home' refrigerated systems. Ref: saveenergy.vic.gov.au Feb 2009

### Bonres Selection System

To ensure that the correct unit is installed in your home, we designed Bonaire's unique Bonres® sizing system. The Bonres® Computerised Unit Selection System takes into account factors such as wall construction, insulation, glass area, room sizes, house orientation e.g. North, South, East, West and the climatic conditions of the area in which you live, to select and design the right Bonaire system for you and your family.





# Bonaire Evaporative Air Conditioning

Bonaire has been manufacturing evaporative coolers with state-of-the-art components and technology for over 50 years. To guarantee your total comfort, all units have been designed by our specialised R & D team to ensure they suit Australian conditions.

### Setting a benchmark in quietness

For the quietest way to stay cool this summer, choose a Bonaire Evaporative Cooling System. That's because Bonaire's direct drive cooling fan is low noise and its effective design means it is extremely efficient.

### Advanced engineering

Advanced engineering design has seen the Bonaire Evaporative Cooling Systems at the leading edge of cooling efficiency. The unique motor and fan construction, together draw air evenly over the four CELdek® pads. This delivers enhanced efficiency, low maintenance and measurable savings in running costs.

The in-built water management system also ensures that a minimum amount of water is used in providing optimal levels of cooling performance.

### Hushdrive motor technology

The patented quiet winding motor design means you can barely hear the unit when it's running.



### Envirowing™ Fan (due Feb. 2012)

Blade design allows for maximum efficiency which results in more cool air delivered into your home and a quiet operating unit. The Envirowing™ is a 1 piece injection moulded fan for strength and optimum performance. It also has excellent high static performance and an airfoil blade section for maximum efficiency.



### Structural strength

Bonaire units have a high strength, injection moulded polymer cabinet. So unlike other competitors units that may sag or warp, they are strong enough to withstand Australian weather conditions and are UV stabilised to ensure sun protection year after year.

### Smart stylish design

In comparison to other units, Bonaire's sleek low profile design sits snugly on your rooftop and comes in a range of stylish colours. This clever design holds less water than conventional flat based units.

### Bonaire Coolstart\*

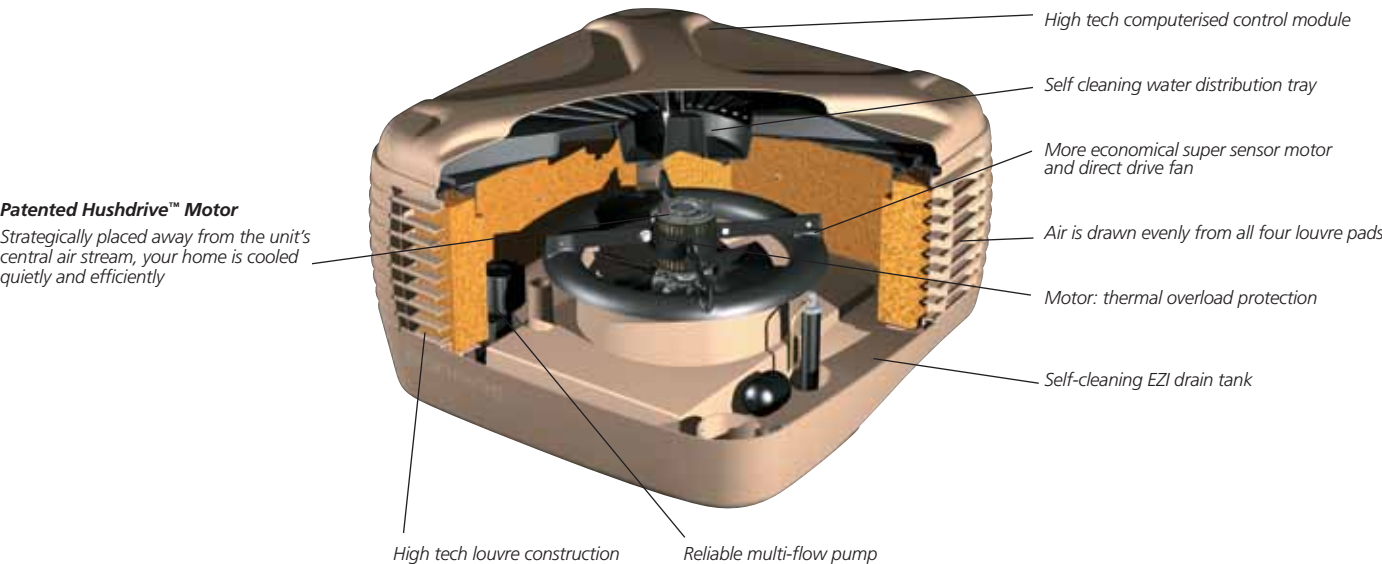
With Bonaire's Pre-Cool System, your home will be cool from the start. You'll only feel cool, fresh air when you turn on your air conditioner as opposed to some competitors units that actually blow hot air for up to 5 minutes.

### Installed by factory-trained specialists

For added peace of mind, we recommend you choose one of our authorised Bonaire specialists, who have been trained to ensure your Bonaire cooler is installed to the highest standards.



\*Only available with Navigator controllers.



# The Bonaire Evaporative Range

Bonaire have always been leaders in evaporative cooling technology and offer you the choice of two outstanding evaporative cooling systems. Whether it's the economical Summer Breeze or the top of the range Integra, you know Bonaire will cool your home ultra efficiently and quietly this summer.

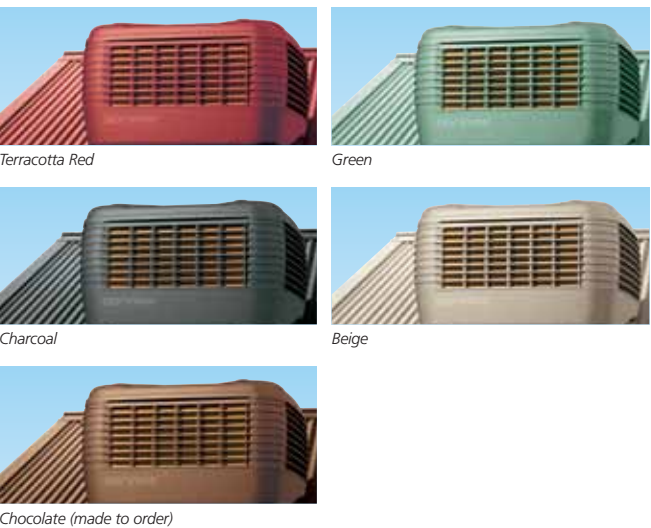
### The Bonaire Summer Breeze

The Summer Breeze range gives you cool, fresh air to every room with just the touch of a button. Carefully designed to maximise energy use, the Summer Breeze will help you save on running costs.

Just look at the benefits it offers to outperform its competition.

- It is low maintenance with measurable savings in running costs
- Strength to withstand the most extreme weather conditions
- A high strength injection moulded polymer cabinet
- Stabilised polymers keep it looking new year after year
- Low noise and efficient direct drive cooling fan
- Sleek, low profile design fits snugly on your roof
- Bonaire Aquamiser™ Water Conservation System standard
- A range of beautiful fashion colours that are aesthetically pleasing
- Circulates only fresh, clean, naturally cooled air throughout your home
- Soft and gentle on nose, eyes, and skin. Ideal for asthma and hayfever sufferers
- More cost-effective to install and run than comparable ducted refrigerated units
- 3 year parts and labour warranty standard
- 3 size options; small, medium and large, to cool any sized home
- Choice of controllers\*\*

### Colours



### The premium Bonaire Integra

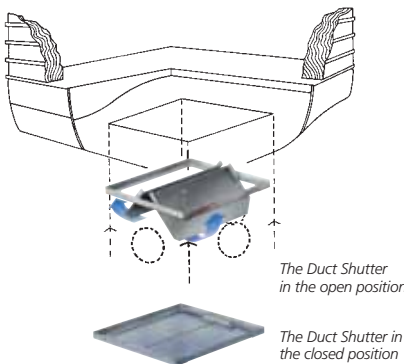
The Bonaire Integra comes standard with a 2 year extended warranty\*, an Enviroseal Duct Shutter and your choice of Navigator Controller, either remote or wall mounted, specially designed and optimised to maximise the performance of your Bonaire Evaporative Air Conditioning.

- It is low maintenance with measurable savings in running costs
- Strength to withstand the most extreme weather conditions
- A high strength injection moulded polymer cabinet
- Stabilised polymers keep it looking new, year after year
- Low noise and efficient direct drive cooling fan
- Sleek, low profile design fits snugly on your roof
- Bonaire Aquamiser™ Water Conservation System standard
- A range of beautiful fashion colours that are aesthetically pleasing
- Circulates only fresh, clean, naturally cooled air throughout your home
- Soft and gentle on nose, eyes, and skin. Ideal for asthma and hayfever sufferers
- More cost-effective to install and run than comparable ducted refrigerated units
- Enviroseal Duct Shutter accessory
- 3 year plus 2 year extended parts and labour warranty accessory\*
- Choice of Navigator Controller



### The Enviroseal Duct Shutter

During winter when the unit is not in use, Bonaire's Enviroseal keeps warm air in and drafts out. It's fully automatic and fits into the duct of your evaporative air conditioning system.



\*Subject to a maintenance service call in the third year.  
\*\*Controller purchased separately.

# A choice of controllers

Putting you in complete control of the climate in your home, you can choose from one of the new Navigator controller series – either a remote or wall mounted controller that are both programmable to your family’s needs and the type of home you have.



Remote Control

### Remote control – Integra only\*

If you are after the very latest in controls and technology, the Navigator wireless radio frequency control is for you. All you have to do is choose the settings you want, and this controller will monitor and maintain temperature and operation, allowing you to change settings without leaving the comfort of your armchair.

- Wireless radio frequency
- Multiple controller option – up to 4 controllers
- Able to operate from room to room
- Thermostat comfort sensing from any room with an outlet
- Large, clear and easy to read backlit LCD display
- Intuitive operation
- Customised operational settings
- Diagnostics and error reporting
- Optional controlling of multiple appliances
- Easy to operate in 4 selectable operating modes
- 24 hour programmable Start and Stop times
- Compatible with Bonaire 4 and 5 Star Gas Central Heating and Bonaire Dual Cycle
- Not available with Bonaire Ducted Reverse Cycle Refrigerated Air Conditioning



Wall Mounted Control

### Wall Mounted Navigator Controller – Summer Breeze & Integra\*

The wall mounted Navigator Controller has all of the features of the wireless, but is fixed in the living areas of your home. It will maintain temperatures and operation and allow all setting changes from a fixed location.

- Large, clear and easy to read backlit LCD display
- Intuitive operation
- Customised operational settings
- Diagnostics and error reporting
- Optional controlling of multiple appliances
- Easy to operate in 4 selectable operating modes
- 24 hour programmable Start and Stop times
- Compatible with Bonaire 3, 4 and 5 star Gas Central Heating and Dual Cycle
- Multiple control option – 1 wall mounted and up to 3 Navigator Remote Controls
- Not available with Bonaire Ducted Reverse Cycle Refrigerated Air Conditioning

### Slimline Digital Controller – Summer Breeze Controller

- Easy to operate and simple timer operation
- Small, compact and slimline
- Option to control multiple Bonaire appliances
- Clear and easy to read LCD display
- Compatible with Bonaire’s Summer Breeze Evaporative Coolers and 3 star ducted heating
- Not available with ducted refrigerated or dual cycle models



Slimline Digital Control

# Bonaire Durango Evaporative Window Air Conditioner

The Bonaire Durango is designed to easily cool today’s open plan homes with areas up to 75 square metres\*. It’s quiet, environmentally friendly and best of all, very economical to run. It can be easily installed into most windows and with its neutral colour, the Bonaire Durango blends in no matter what the environment.



### Features

- Cools an area up to 75 square metres\*
- Costs less than 25 cents per day to run\*\*
- 250mm deep low profile cabinet does not obstruct exterior area
- Powerful three speed fan motor
- Direct drive fan for higher efficiency
- Easy to install into most windows
- Transition duct supports the unit without any need for additional structural support
- UV stabilised polymer cabinet will never rust
- Uses standard electrical and plumbing connections
- The cool and ventilation mode allows the choice of water flow cooling or just fan operation
- Full two year parts and labour warranty



Pictures may not depict latest model



### Product Specification

Air flow	4,500 m3/hr		
Window section	H 550mm	W 550mm	D 260mm
External cabinet	H 1170mm	W 850mm	D 250mm
External cabinet clearance (top)	100mm		
Weight	40kg		
Electrical	240 Volts	1 Phase	50 Hz
Fan speeds	3		

\* Depending on geographic location, unit position, room heat gain, and 2.4m ceiling height @ 25 air changes per hour.  
 \*\*Based on 8 hours of running @ 14 cents per kWh.

\*Refer to page 9 for more information.



# Bonaire Inverter Reverse Cycle Air Conditioning<sup>^</sup>

## The ultimate in climate control

The Bonaire Inverter Ducted Reverse Cycle Air Conditioning System has been designed so that you and your family can relax in complete comfort.



### Inverter technology

Bonaire Ducted Inverter Technology accurately matches your cooling or heating requirements to give you energy efficiency. Conventional fixed speed units operate at 100% delivering a fixed volume of heating or cooling. Effectively they operate on a stop/start system. Bonaire's advanced inverter technology increases or decreases the power depending on the conditions. Compressors will vary their capacity to maintain a consistent temperature.



Talk to your dealer about matching your cooling needs with Bonaire's Zoning Control Accessory Kits. This system offers you the flexibility to control cooling in up to 8 living zones so you can choose between cooling the kitchen, dining and family rooms, bedrooms or the study to suit your lifestyle requirements. Please see your Bonaire dealer to discuss your lifestyle requirements.

The Bonaire Inverter Reverse Cycle Air Conditioning System consists of an outdoor unit conveniently located outside your home and an indoor unit concealed out of sight. They are connected to an insulated duct system which distributes the conditioned air through your home via small floor or ceiling registers. So no matter what your style of home, your Bonaire Inverter Air Conditioner will hardly be seen or noticed.

To ensure that the correct unit is installed in your home, we have developed Bonres<sup>®</sup>, Bonaire's unique sizing system.

The Bonres<sup>®</sup> computerised unit selection system takes into account such things as wall construction, insulation, glass area, room sizes and the climatic conditions of the area in which you live, to select and design the right Bonaire system for you and your family.

### The ultimate peace of mind

For added peace of mind, we recommend you choose one of our authorised Bonaire specialists, who have been trained to ensure your Bonaire Air Conditioner is installed to the highest standards.

### Warranty

Every Bonaire Inverter Ducted Reverse Cycle Air Conditioner is manufactured to stringent quality standards and backed by a five year residential and two year commercial, parts and labour warranty fully supported by Bonaire's National Service Division.

It's real peace of mind as you and your family enjoy the ultimate in home climate control.



### The ultimate in performance

Built to Australian standards, Bonaire Inverter Ducted Reverse Cycle Air Conditioners feature internal noise insulation for quiet performance, state-of-the-art compressors and electronically controlled variable speed outdoor fans to ensure optimum performance at maximum output.

To ensure long lasting reliability, even in Australia's extreme environment, all Bonaire outdoor units have a powder coated cabinet and refrigeration coils are manufactured with a hydrophilic polymer anti-corrosion coating.

Bonaire Inverter Refrigerated Air Conditioners use an indoor fan coil unit, especially designed for Australian homes and conditions.

Other clever design features include auto restart, to restart units in the event of a power failure.

Finally, Auto Changeover allows one temperature to be set which runs the unit in heating or cooling mode and maintains comfort in all models of Bonaire high performance Inverter Refrigerated Air Conditioning Units.

They are available in 12kW, 14kW and 18kW models. 12kW and 14kW models come in single phase power supply saving on installation costs. 18kW model comes in three phase power supply.

Bonaire's NEW 18kW 3 phase model has a top air discharge on the outdoor condenser unit that is designed for tight installations outside the home.

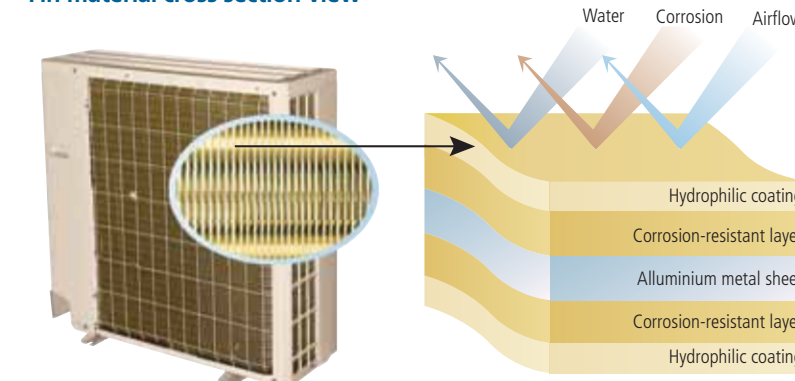


Programmable wall controller  
— included with unit



IR remote controller  
— included with unit

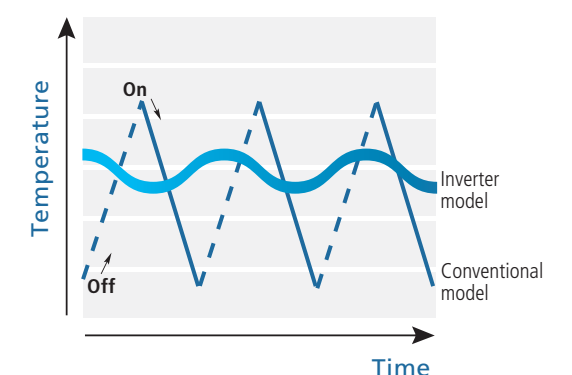
### Fin material cross section view



All Bonaire outdoor units are manufactured with an anti-corrosion material for long lasting reliability.

<sup>^</sup>Bonaire Inverter Reverse Cycle Air Conditioning Systems are only available in Victoria.

### Inverter Technology





# Bonaire Inverter High Wall Split System Air Conditioning

Bonaire is proud to launch our new range of inverter high wall split systems. The Bonaire range of inverter high wall split systems have clever features coupled with a stylish design to complement today's modern homes.



\*Picture shown may vary slightly from actual model.

7.0kW Indoor Unit\*

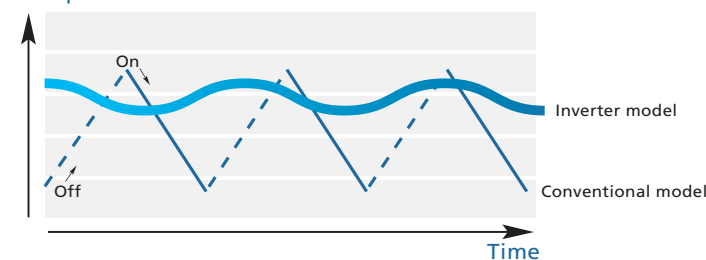
## Good looks

At Bonaire we understand that the appearance of your unit is important and the Bonaire Wall Mounted Unit will blend unobtrusively into today's homes. It also has functional appeal as the panel can be simply wiped clean.

## Inverter technology

Bonaire Inverter technology accurately matches your cooling or heating requirements to give you energy efficiency. Conventional fixed speed units operate at 100% delivering a fixed volume of heating or cooling. They effectively operate on a stop/start system. Bonaire's advanced inverter technology increases or decreases the power depending on the conditions. Bonaire's compressors will vary their capacity to maintain a consistent temperature.

## Temperature



## High energy efficiency

As a result, Inverter air conditioners are smoother in operation, more economical, quieter and deliver higher efficiency compared to conventional systems.



3.5 and 5.2kW Indoor Unit\*

\*Picture shown may vary slightly from actual model.

## More economical

Because an Inverter will increase or decrease power to the compressor and fans depending on the requirement, this means they can operate more economically than traditional fixed speed units.

## Comfort levels

When the Bonaire Inverter Air Conditioner is switched on in either heating or cooling mode it will automatically operate at high speed to ensure your selected temperature is achieved quickly. It will then adjust the fan speed to maintain the desired room temperature.

## Low noise level

The Bonaire Inverter operates so quietly you will hardly notice it. It can also operate in low noise sleep function where the unit will automatically adjust the temperature to make the room more comfortable while you sleep.

## The right advice

If your unit is too small you can end up with reduced comfort levels, if it's too big you could have a large electricity bill. Bonaire dealers are specialists in heating and cooling and will ensure the unit is correctly sized for your requirements. Our dealers are also installers and will give you a price covering all the installation requirements.

## Service support

Bonaire Inverter Air Conditioners are fully backed up by Bonaire's integrated service department giving you total peace of mind.



External Condenser Unit

## Remote controls

The remote control makes it easy to operate the system. The LCD display on the remote and the LED display on the unit allow you to view the current settings.

## Simple programming

Simple programming functions allow you to easily program functions like 'time till on' and 'time till off'.

## Air filters

Easily removable and washable air filters enable you to wash out dust and other air-borne particles.

## Intelligent digital dehumidification

Controls the comfort level of the humidity in the air for a more comfortable room temperature.

## Fan only mode

This setting runs the fan only, which is ideal for Autumn and Spring, providing air movement within the room.

## 'I feel' mode

Allows you to preset an automatic temperature and fan speed to optimise comfort based on outside ambient temperatures.

## Warranty

The Bonaire Inverter High Wall Split System is supported with a five year domestic parts and labour warranty.



Domestic warranty only



# Bonaire Inverter Dual Cycle Refrigerated Air Conditioning^

The ultimate in home heating and cooling, all year round. When you couple a Bonaire Ducted Gas Heating unit with a Bonaire Inverter Ducted Refrigerative unit, your complete Bonaire Inverter Dual Cycle System delivers warm and cool air effortlessly through the same concealed duct work.

At Bonaire, we strongly recommend matching only Bonaire gas central heating with Bonaire Inverter Refrigerated Air Conditioning and a duct system specifically designed for a dual cycle. The end result is Australia's ultimate dual cycle system.

With thermostatic temperature control all year round, you'll enjoy the ultimate in climate control for your family even during sustained periods of hot and humid weather or freezing cold weather.



- Ultimate features and benefits**
- Bonaire Inverter Dual Cycle Systems\* have been designed to deliver efficient and reliable performance all year round. Some of the benefits of installing a Bonaire Inverter Dual Cycle System with a Bonaire Ducted Gas Heater are:
- The entire system's operation, programming and zoning selection can be controlled by one controller
  - Uncompromised constant heating performance regardless of how cold it is outside
  - Inverter air conditioning technology for efficiency and economical operation
  - Fully combined heating and cooling comfort via a single ducting system – specifically designed for a Bonaire Inverter Dual Cycle System
  - Zone control standard†. Heat or cool only the rooms you want to
  - Integrated zoning control† on all 4 and 5 star ducted gas central heating units
  - Installed to Bonaire's Bonres® Computerised Unit Selection System\*\*
  - Engineered for Australian conditions
  - Only compatible with Bonaire MB4 or MB5 Gas Ducted Heating units.

**Ultimate in peace of mind**

Every Bonaire Inverter Dual Cycle System is manufactured to stringent quality standards backed by a five year residential and two year commercial, parts and labour warranty\*\*\* and Bonaire's fully trained National Service Division.

It's real peace of mind as you and your family enjoy the ultimate heating and cooling solution for your home.



**Bonaire Inverter Dual Cycle Matching Chart**

	MB4 4 Star	MB5 5 Star
BI 12	20kW XA, 30kW	21kW XA, 30kW
BI 14	20kW XA, 30kW, 30kW XA	21kW XA, 30kW, 30kW XA, 35 kW
BI 18	30kW XA	30kW XA, 35kW

^Bonaire Inverter Dual Cycle Systems are not available for sale in Queensland and South Australia.  
 \*Bonaire Inverter Dual Cycle Systems are only recommended for sale and installation with matched Bonaire ducted gas heating units.  
 \*\*Invalid if not sized strictly in accordance with Bonres® specifications. Installation and commissioning to manufacturer's and industry standards and state regulatory law is the responsibility of the installer.  
 \*\*\*The Bonaire Inverter Dual Cycle warranty does not apply to the ducted gas heating unit. All Bonaire ducted gas heating units carry their own warranty program and conditions. Please refer to your dealer or product information for more details.  
 †Individual zone motors supplied by installer at additional costs.



Outdoor refrigerated unit dual cycle system (12 & 14kW unit shown)

Outdoor refrigerated unit dual cycle system (18kW unit shown)

Indoor refrigerated unit dual cycle unit (18kW unit shown)

# New homes and renovations with Bonaire

Whether you're building a new home or renovating, we recommend you consider the following points to make sure you choose the right cooling system.



- Building a new home**
- If you're building a new home, it makes sense to ensure you incorporate central heating and cooling planning from the outset so that they are part of your earliest designs, and not an after thought. After all, your home is your biggest investment and the right ducted heating and cooling system will add value to your investment. It can be easily integrated into the construction of your home and make for simpler and more efficient installation during construction. Here are some points to consider:
- Lifestyle choice of indoor, outdoor living with evaporative cooling
  - Environmental option of evaporative cooling
  - Running costs are lower with evaporative cooling
  - Ultimate Bonaire Zoned Ducted Refrigerated Air Conditioning

- Bonaire can provide your total heating and cooling solutions from the design stage onwards
  - Energy efficient homes should consider an evaporative cooling option
  - Ducted gas heating/inverter dual cycle Bonaire Systems gives you the ultimate in heating and cooling.
- Renovating your home**
- Whether you already have an existing evaporative or refrigerated air conditioning system, Bonaire has the range that's ideal for you. However, before you install a new system there are a few points that you should consider.
- You should check if your existing duct work can handle your future needs as it may need to be upgraded.
  - Also, check if your current air conditioner is suitable for your existing needs and will it meet your new requirements once the renovation is complete.
  - Another consideration is whether you need upgrading from a room air conditioner to Bonaire's whole-of-home ducted cooling.

All of these can make your new Bonaire Air Conditioner even more efficient.

Finally, you should consider a Bonaire Gas Heating option. This means your one controller will cater for both your heating and cooling needs all year round.

# Bonaire, the year round choice

Bonaire lets you enjoy complete heating and cooling comfort all year round at the touch of a button. Illustrating our commitment to innovation, Bonaire Ducted Evaporative Cooling can be combined with Bonaire 3, 4 or 5 Star Gas Ducted Central Heating using just one thermostat. You have the choice of installing Bonaire heating at the same time as your Bonaire cooling or simply add it at a later date.

Please ask your dealer for a Bonaire Gas Heating Product Brochure.



Bonaire is a Quality Endorsed Company and all products are Australian owned. In addition, all products made and engineered by Bonaire are backed by Climate Technologies National Service Division, a wholly Australian owned company.



Bonaire MB4 4 star external model





Specifications

BONAIRE INVERTER HIGH WALL SPLIT AIR CONDITIONING

Model Number		BH35	BH52	BH70
Model indoor		BHWSI35	BHWSI52	BHWSI70
Indoor part number		6700038	6700048	6700058
Model outdoor		BHWSO35	BHWSO52	BHWSO70
Outdoor part number		6700037	6700047	6700057
Type		Reverse Cycle Inverter	Reverse Cycle Inverter	Reverse Cycle Inverter
Control type		Remote	Remote	Remote
Rated cooling capacity	kW	3.2	5.0	7.0
Rated cooling capacity range	kW	1.0 ~ 4.2	1.8 ~ 5.7	2.5 ~ 7.5
Rated heating capacity	kW	3.3	5.2	7.5
Rated heating capacity range	kW	1.1 ~ 4.5	1.8 ~ 6.5	2.5 ~ 8.2
AEER (cooling)		3.76	3.29	3.38
Star rating cooling		3.0	2.0	2.26
ACOP (heating)		3.75	3.29	3.28
Star rating for heating		3.0	2.0	2.05
Moisture removal	l/Hr	1.0	2.0	2.5
Indoor sound pressure level at 1 MTR (high speed)	dB(A)	42.0	42.0	54
Outdoor sound pressure level at 1 MTR	dB(A)	55	56	58
Outdoor operating temperature range	Cooling	21°C ~ 43°C	21°C ~ 43°C	21°C ~ 43°C
	Heating	-5°C ~24°C	-5°C ~24°C	-5°C ~24°C
Electrical Data				
Power supply		220 ~ 240VAC /50/1P	220 ~ 240VAC /50/1P	220 ~ 240VAC /50/1P
Rated current (Amps)	Cooling	3.8	6.7	9.3
	Heating	3.9	6.9	9.8
Rated input (Watts)	Cooling	840	1480	2100
	Heating	860	1540	2200
Refrigerant System				
Refrigerant type		R410A	R410A	R410A
Compressor type		Rotary	Rotary	Rotary
Evaporator coil		3 bend	3 bend	3 bend
Condenser coil		Double arranged	Double arranged	Double arranged
Fan system				
Indoor air circulation	l/s	208/200	292/292	403/431
Indoor fan motor output	Watts	23	23	35
Outdoor fan motor output	Watts	31	68	65
Connections				
Connecting pipe - gas	Inches	1/2	1/2	5/8
Connecting pipe max length	Metres	15	15	15
Connecting pipe - liquid	Inches	1/4	1/4	3/8
Connecting pipe max length	Metres	15	15	15
Other				
Suitable area	M²	15~23	25~40	30~50
Indoor dimensions (WxHxD)	mm	898 x 280 x 202	898 x 280 x 202	1240 x 325 x 250
Outdoor dimensions (WxHxD)	mm	760 x 552 x 256	820 x 605 x 300	902 x 650 x 307
Packaging dimensions indoor (WxHxD)	mm	995 x 365 x 298	995 x 365 x 298	1317 x 422 x 338
Packaging dimensions outdoor (WxHxD)	mm	863 x 598 x 376	965 x 650 x 438	1031 x 925 x 447
Gross weight indoor	Kg	14	14	25
Gross weight outdoor	Kg	38	46	62
Warranty – domestic		5 year parts and labour	5 year parts and labour	5 year parts and labour

\*All units tested to T1 parameters

BONAIRE EVAPORATIVE AIR CONDITIONING

Model		VSS50	VSS55	VSM60	VSM65	VSL70	VSL75
Height (mm)	Front	683	683	790	790	1047	1047
	Back	573	573	681	681	937	937
Width (mm)		1184	1184	1192	1192	1192	1192
Weight (kg)		61	61	65	65	80	80
Duct work (mm)		550 x 550	550 x 550	550 x 550	550 x 550	800 x 550	800 x 550
Water Conservation System®		Standard	Standard	Standard	Standard	Standard	Standard

Unit sizing

All Evaporative Air Conditioners vary in performance according to the architectural features of a home and different climatic conditions in Australia. Bonaire recommends using the Bonres®

Unit Selection Guide as the only reliable method of determining the cooling capacity of a Bonaire unit in your home.

BONAIRE INVERTER REVERSE CYCLE DUCTED REFRIGERATIVE AIR CONDITIONING

Model		Indoor Outdoor	BI 12	BI 14	BI 18
Models					
Outdoor condenser unit			6650020	6650030	6650040
Reverse cycle indoor fan coil unit			6650021	6650031	6650041
Capacity					
Rated capacity	Cooling	kW	12	14	18
	Heating	kW	13.2	15.3	18.5
Power input	Cooling	kW	4.35	5.07	6.08
	Heating	kW	4.2	4.35	5.35
Performance					
Rated system air flow		l/s @ High speed	639	750	1028
Rates system static pressure		Pa	50 ~ 180	50 ~ 180	50 ~ 180
Outdoor sound pressure		dB(A) @ 1 Mtr	61	62	68
Rated eer (cooling)			2.76	2.77	2.77
Rated cop (heating)			3.21	3.2	3.35
Rated aeer (cooling)			N/A	N/A	2.75
Rated acop (heating)			N/A	N/A	3.31
Star rating (cooling)			3.5	3.5	1*
Star rating (heating)			4	4	2.1*
Outdoor unit operating range cooling		Degrees C	5 ~ 48	5 ~ 48	5~48
Outdoor unit operating range heating		Degrees C	(-10) ~ 28	(-10) ~ 28	(-10) ~ 28
Suitable area		M² @ 2.4 M Ceiling	36 ~ 60	56 ~ 93	64 ~ 110
Electrical					
Power supply		Voltage /Phase	240/1	240/1	415/3
Running current cooling		Amp	22.6	26.8	16.8
Running current heating			21.9	24.4	15.4
Full load amps		Amp	26.6	30	18.3
Voltage range (condenser unit)			198 ~ 254	198 ~ 254	342 ~ 418
Dimensions					
Outdoor unit		W x H x D	950 x 1255 x 410	950 x 1255 x 410	940 x 1620 x 820
Outdoor unit packaging dimensions		W x H x D	1030 x 1380 x 440	1030 x 1380 x 440	1000 x 1780 x 850
Indoor unit		W x H x D	1200 x 380 x 590	1200 x 380 x 590	1470 x 500 x 825
Indoor unit packaging dimensions		W x H x D	1410 x 445 x 695	1410 x 445 x 695	1588 x 650 x 930
Gross weight outdoor unit		Kg	122	122	273
Gross weight indoor unit		Kg	63	63	113
Refrigeration system					
Compressor system			Dual- Fixed & Inverter	Dual- Fixed & Inverter	Dual- Fixed & Inverter
Refrigerant		Type	R410A	R410A	R410A
Pre charge pipe length		Mts	5	5	5
Pre charge quantity		kg	3.2	3.9	8.8
Additional charge		Grams/Mtr	100	100	110
Pipe size (liquid)		mm (")	9.53 (3/8")	9.53 (3/8")	12.7 (1/2")
Pipe size (suction)		mm (")	19.05 (3/4")	19.05 (3/4")	22.0 (7/8")
Pipe length (maximum)		Mts	25	25	35
General information					
Outdoor unit colour			Cream	Cream	Cream
Outdoor unit paint finish			Powder Coated	Powder Coated	Powder Coated
Outdoor fan grill material			UV Stabilised Polypropylene	UV Stabilised Polypropylene	UV Stabilised Polypropylene
Features					
7 Day programmable control			✓	✓	✓
Infra red remote control			✓	✓	✓
Auto changeover cooling to heating			✓	✓	✓
Dual compressors			✓	✓	✓
Optional compatible zone system			✓	✓	✓

The full technical data chart should be consulted for more technical detail. This product must be installed by a qualified licensed installer.

\*2011 Star Rating Algorithm

BONAIRE DUAL CYCLE SYSTEM MATCHING CHART

	BI 12	BI 14	BI 18
MB4 4 Star	20kW XA, 30kW	20kW XA, 30kW, 30kW XA	30kW XA
MB5 5 Star	21kW XA, 30kW	21kW XA, 30kW, 30kW XA, 35 kW	30kW XA, 35kW



Your nearest Bonaire stockist is:-

For further information please phone:

**VIC/ACT/NSW/QLD** (03) 8795 2424

**WA** (08) 9454 1010

**SA** (08) 8307 5300

[www.bonaire.com.au](http://www.bonaire.com.au)



**BONAIRE®**

The leaders in heating and cooling

[www.bonaire.com.au](http://www.bonaire.com.au)

**A CLIMATE TECHNOLOGIES BRAND. ABN 13 001 418 042. 26 Nylex Avenue, Salisbury 5108.**

In the interest of continued product improvement, Bonaire reserves the right to alter specifications without notice E & OE. Colours represented are as accurate as the printing process will allow.  
For further information on warranty terms and conditions please refer to Bonaire's warranty information booklet. Domestic warranty only. Unit warranty for commercial applications varies depending on model.

BON702 January 2012