

Compact Type Fits Neatly into Lowered Ceiling

SEZ series CEILING- CONCEALED



SEZ Series



SUZ Series

NEW



Remote Controller

Ultra slim body of
200mm height

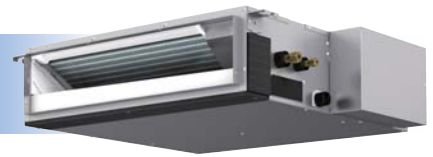
Low noise type

Our SEZ series achieves stringent economy in all aspects of air conditioning to realize significant cost-savings

- **Whisper-quiet operation ideal for hotel rooms, living rooms and other residential uses**
- **Our newly developed advanced MA remote controller allows a renovating air conditioning communication**
- **Integrated package (outdoor unit, indoor unit and remote controller) ensures quality air conditioning and minimizes installation work**



Integrated System Creates a Pleasant Air Conditioning Environment

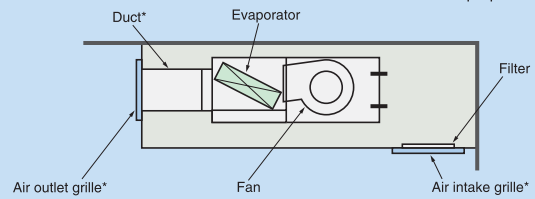


Our SE compact ceiling-concealed series offers an integrated package which ensures the ultimate in air conditioning quality and comfort with minimum costs and installation fuss. The outdoor unit, indoor unit and remote controller work as a streamlined team, delivering air conditioning performance which is ideal for homes, offices, hotels, and various kinds of applications.

- Ultra-compact design saves installation space (indoor unit only 200mm high).
- Easy installation and service.
 - Self-diagnostic troubleshooting function.
 - Easy wiring and piping connections.
- Super quiet operation (indoor unit only 23-30 dB(A) at low speed).
- Expensive duct work not required.
- Three fan speeds (Low-Mid-High) and four static pressure levels (5-15-35-50Pa) are available by using the DC fan motor to meet various applications needs.

Indoor Unit Outlines

*Should be prepared locally.



*Access door is required.

Wired Remote Controller

Advanced MA remote controller(New)



- DOT LIQUID CRYSTAL display
- MULTI-LANGUAGE display
- OPERATION CONTROL function
- WEEKLY TIMER

Wireless Remote Control for Easy Operation



- Fan Speed Selection (3 speed)
- Operation Mode Switch (cool – dry – fan)
- On/Off Timer
- Fan Speed Indicator
- Hour Buttons (for setting the timer)

Model name	Indoor unit		SEZ-KD25VA (L)	SEZ-KD35VA (L)	SEZ-KD50VA (L)	SEZ-KD60VA (L)	SEZ-KD71VA (L)	
	Outdoor unit		SUZ-KA25VA	SUZ-KA35VA	SUZ-KA50VA	SUZ-KA60VA	SUZ-KA71VA	
Cooling	Capacity	BTU/h	8,500	11,900	17,100	18,800	24,200	
		kW	2.5 (0.9-3.2)	3.5 (1.0-3.9)	5.0 (1.1-5.6)	5.5 (1.1-6.3)	7.1 (0.9-8.3)	
	Total input	kW	0.778	1.09	1.78	1.89	2.53	
	EER		3.21	3.21	2.81	2.91	2.81	
	Energy label class		A	A	C	C	C	
	SHF		0.80	0.78	0.76	0.79	0.74	
Heating	Capacity	BTU/h	10,200	13,600	20,500	23,900	27,600	
		kW	3.0 (0.9-4.5)	4.0 (0.9-5.0)	6.0 (1.1-7.2)	7.0 (0.9-8.0)	8.1 (0.9-10.4)	
	Total input	kW	0.83	1.108	1.87	2.05	2.37	
	COP		3.61	3.61	3.21	3.41	3.42	
	Energy label class		A	A	C	B	B	
	Booster heater	kW	-	-	-	-	-	
Indoor unit	Air flow (Low-Mid-High)	CMM	5.5-7.0-9.0	7.0-9.0-11.0	10.0-12.5-15.0	12.0-15.0-18.0	12.0-16.0-20.0	
		CFM	190-250-320	250-320-390	350-440-530	420-530-640	420-570-710	
	External static pressure	Pa	5-15-35-50					
	Sound level (Low-Mid-High)	dB(A)	23-26-30	23-28-33	30-34-37	30-34-38	30-35-40	
	External finish		Galvanized sheets					
	Dimension	W : mm	700	900	900	1100	1100	
			D : mm	700	700	700	700	700
			H : mm	200	200	200	200	200
		W : inch	27-9/16	35-7/16	35-7/16	43-5/16	43-5/16	
			D : inch	27-9/16	27-9/16	27-9/16	27-9/16	27-9/16
H : inch			7-7/8	7-7/8	7-7/8	7-7/8	7-7/8	
Weight	kg	18	21	23	27	27		
	lbs	40	47	51	60	60		
Field drain pipe		O.D. 32 (1-9/32)						
Outdoor unit	Dimension	W : mm	800	800	840	840	840	
		D : mm	285	285	330	330	330	
		H : mm	550	550	850	850	850	
		W : inch	31-1/2	31-1/2	33-1/16	33-1/16	33-1/16	
		D : inch	11-1/4	11-1/4	13	13	13	
		H : inch	21-5/8	21-5/8	33-7/16	33-7/16	33-7/16	
	Weight	kg	33	37	53	53	58	
		lbs	73	82	117	117	128	
Refrigerant pipe size	Gas side O.D.	mm	9.52	9.52	12.7	15.88	15.88	
		inch	3/8	3/8	1/2	5/8	5/8	
	Liquid side O.D.	mm	6.35	6.35	6.35	6.35	9.52	
		inch	1/4	1/4	1/4	1/4	3/8	
Refrigerant pipe length	Height difference	m	Max.12	Max.12	Max.30	Max.30	Max.30	
	Length	m	Max.20	Max.20	Max.30	Max.30	Max.30	

 **MITSUBISHI ELECTRIC CORPORATION**
<http://Global.MitsubishiElectric.com/>