

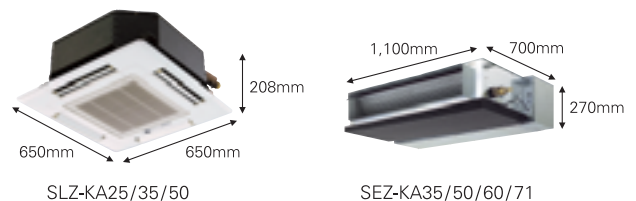
# SLZ/SEZ Series

Our super-quiet compact indoor unit, with cutting edge remote control.  
Comfortable operation for the living room, bedroom, other home quarters.



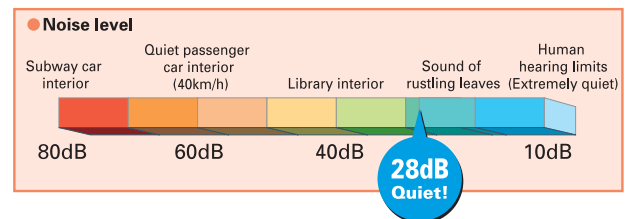
## Compact Design

Models for any room in the house. For 2×2 ceiling installation, the SLZ compact cassette, for a perfect fit. The concealed ceiling model, the SEZ Series, compresses installation space at only 270mm in height.



## Very Quiet Operation

The S Series, for whisper-quiet operation. Hushed noise level of 28dB (SLZ-KA25VA for cooling). For calm and comfy space. Customize the S Series to your bedrooms or living rooms. You would not recognize the existence of air conditioner.



## 7-Day Programmer

The Mitsubishi Electric new MA remote controller, supporting truly exceptional room comfort. Program the system with this weekly timer, inputting up to 8 patterns for each calendar day.



PAR-21MAA

### <New Functions>

- Limiting the set temperature range.
- Auto OFF Timer
- Operation Lock
- Multi-language Display  
(English, Spanish, Italian, German, French, Russian, Chinese, Japanese)

## Energy Saving

Low energy consumption—a must for today's air conditioners. The SLZ/SEZ Series – key to fresh, cost-effective air comfort.

## Air-Cleansing Filter



This built-in filter removes dust and contaminants, keeping air fresh all the time. Maintenance is as simple as vacuuming. And more, SLZ Series have a long life filter. It can keep their performance about 2,500 hours without replacement.



# SLZ-KA Series

R410A

DC Inverter

HEAT PUMP

Cleaning-free, pipe reuse

Indoor Unit



Remote Controller

Outdoor Unit



SUZ-KA25/35VA



SUZ-KA50VA



## 4way Cassette Type Specifications

| Type                                 |                                   | Inverter Heat Pump (R410A)                    |                    |                    |                    |                |
|--------------------------------------|-----------------------------------|---|--------------------|--------------------|--------------------|----------------|
| Model Name                           |                                   | SLZ-KA25VA                                    | SLZ-KA35VA         | SLZ-KA50VA         |                    |                |
| Indoor Unit                          |                                   | SLZ-KA25VA(L)*                                | SLZ-KA35VA(L)*     | SLZ-KA50VA(L)*     |                    |                |
| Outdoor Unit                         |                                   | SUZ-KA25VA                                    | SUZ-KA35VA         | SUZ-KA50VA         |                    |                |
| Power Supply [V, Phase, Hz]          |                                   | 230V, Single, 50Hz, Outdoor unit power supply |                    |                    |                    |                |
| Cooling                              | Capacity [Min. - Rated - Max.]    | kW  | 0.9 - 2.5 - 3.2    | 1.0 - 3.5 - 3.9    | 1.1 - 4.6 - 5.2    |                |
|                                      | Total Input [Min. - Rated - Max.] | kW  | 0.25 - 0.69 - 1.00 | 0.27 - 1.06 - 1.33 | 0.49 - 1.63 - 2.13 |                |
|                                      | EER                               |   |                    | 3.62               | 3.30               | 2.82           |
|                                      |                                   | Star Rating                                   |                    | 6.0                | 5.0                | 3.5            |
|                                      | Running Current [Rated]           | A   | 3.4                | 4.9                | 7.4                |                |
|                                      | Sound Pressure Level              | IN [Lo - Med - Hi]                            | dB(A)              | 28 - 31 - 37       | 29 - 33 - 38       | 30 - 34 - 39   |
|                                      |                                   | OUT (PWL)                                     | dB(A)              | 46 (59)            | 47 (60)            | 53 (68)        |
| Air Volume (IN) [Lo - Mid.- Hi ]     | I/S                               | 133 - 150 - 167                               | 133 - 150 - 183    | 133 - 150 - 183    |                    |                |
| Heating                              | Capacity [Min. - Rated - Max.]    | kW  | 0.9 - 3.0 - 4.5    | 0.9 - 4.0 - 5.0    | 0.9 - 5.0 - 6.5    |                |
|                                      | Total Input [Min. - Rated - Max.] | kW  | 0.17 - 0.83 - 1.36 | 0.25 - 1.10 - 1.46 | 0.39 - 1.55 - 3.36 |                |
|                                      | COP                               |   |                    | 3.61               | 3.64               | 3.22           |
|                                      |                                   | Star Rating                                   |                    | 5.0                | 5.0                | 4.0            |
|                                      | Running Current [Rated]           | A   | 4.0                | 5.1                | 7.0                |                |
|                                      | Sound Pressure Level              | IN [Lo - Med - Hi]                            | dB(A)              | 28 - 31 - 37       | 29 - 33 - 38       | 30 - 34 - 39   |
|                                      |                                   | OUT (PWL)                                     | dB(A)              | 46 (59)            | 48 (61)            | 55 (68)        |
| Air Volume (IN) [Lo - Mid.- Hi ]     | I/S                               | 133 - 150 - 167                               | 133 - 150 - 183    | 133 - 150 - 183    |                    |                |
| Starting Current                     | A                                 | 3.65  | 4.75               | 6.75               |                    |                |
| Max. Running Current                 | A                                 | 8.16  | 9.18               | 16                 |                    |                |
| Indoor                               | Input [Rated]                     | W   | 75                 | 85                 | 85                 |                |
|                                      | Dimensions [H x W x D]            | mm  | 208 x 570 x 570    | 208 x 570 x 570    | 208 x 570 x 570    |                |
|                                      |                                   | Panel   | mm                 | 20 x 650 x 650     | 20 x 650 x 650     | 20 x 650 x 650 |
| Weight (Panel)                       | kg                                | 16.5 (3)                                      | 16.5 (3)           | 16.5 (3)           |                    |                |
| Outdoor                              | Dimensions [H x W x D]            | mm  | 550 x 800 x 285    | 550 x 800 x 285    | 850 x 840 x 330    |                |
|                                      | Weight                            | kg  | 33                 | 37                 | 53                 |                |
|                                      | Breaker Size                      | A   | 10                 | 10                 | 20                 |                |
| Ext. Piping                          | Diameter (Gas / Liquid)           | mm  | 9.52 / 6.35        | 9.52 / 6.35        | 12.7 / 6.35        |                |
|                                      | Max. Length / Height              | m   | 20 / 12            | 20 / 12            | 30 / 15            |                |
| Guaranteed Operating Range [Outdoor] | Cooling                           | °C  | -10 ~ 46           | -10 ~ 46           | -10 ~ 43           |                |
|                                      | Heating                           | °C  | -10 ~ 24           | -10 ~ 24           | -10 ~ 24           |                |

\* SLZ-KA VAL is with a wireless remote controller.

R410A

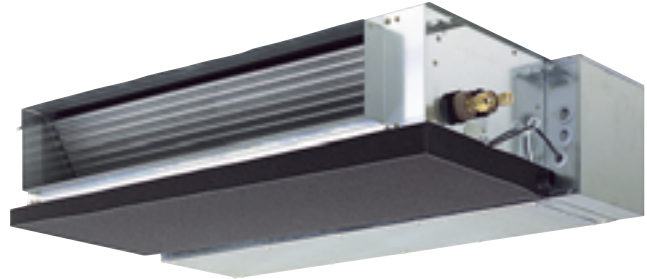
DC Inverter

# SEZ-KA Series

HEAT PUMP

Cleaning-free, pipe reuse

Indoor Unit



Outdoor Unit



SUZ-KA35VA



SUZ-KA50/60/71VA

- DC Inverter
- PAM Control
- Air-Cleaning  
No replacement necessary - cleans every 100h operation
- 270mm Compact
- ACO
- Auto Restart
- Cooling at 46°C/-10°C
- Cooling at -10°C
- Heating at -10°C
- Weekly Timer
- Centralized On/Off  
Optional
- M-NET connection  
Optional
- Self Diagnosis  
check code
- 12m 20m  
KA35
- 15m 30m  
KA50/60/71
- MXZ connection
- Flare connection

Remote Controller



## Ceiling Concealed Type Specifications

| Type                                 |                                   | Inverter Heat Pump (R410A)                    |                    |                    |                    |                    |         |
|--------------------------------------|-----------------------------------|---|--------------------|--------------------|--------------------|--------------------|---------|
| Model Name                           |                                   | SEZ-KA35VA                                    | SEZ-KA50VA         | SEZ-KA60VA         | SEZ-KA71VA         |                    |         |
| Indoor Unit                          |                                   | SEZ-KA35VA                                    | SEZ-KA50VA         | SEZ-KA60VA         | SEZ-KA71VA         |                    |         |
| Outdoor Unit                         |                                   | SUZ-KA35VA                                    | SUZ-KA50VA         | SUZ-KA60VA         | SUZ-KA71VA         |                    |         |
| Power Supply [V, Phase, Hz]          |                                   | 230V, Single, 50Hz, Outdoor unit power supply |                    |                    |                    |                    |         |
| Cooling                              | Capacity [Min. - Rated - Max.]    | kW  | 1.0 - 3.5 - 3.9    | 1.1 - 5.0 - 5.6    | 1.1 - 5.5 - 6.3    | 0.9 - 7.1 - 8.3    |         |
|                                      | Total Input [Min. - Rated - Max.] | kW  | 0.85 - 1.06 - 1.31 | 1.42 - 1.78 - 2.21 | 1.6 - 1.96 - 2.43  | 0.82 - 2.46 - 3.52 |         |
|                                      | EER                               |   | 3.30               | 2.81               | 2.81               | 2.89               |         |
|                                      | Running Current [Rated]           | A   | 4.9                | 8.0                | 9.0                | 10.9               |         |
|                                      | Sound Pressure Level              | IN [Lo - Hi]                                  | dB(A)              | 30 - 35            | 31 - 39            | 32 - 43            | 32 - 43 |
|                                      |                                   | OUT (PWL)                                     | dB(A)              | 47 (60)            | 53 (68)            | 53 (68)            | 53 (68) |
| Air Volume (IN) [Lo - Hi]            | I/S                               | 167 - 217                                     | 200 - 283          | 200 - 333          | 200 - 333          |                    |         |
| Heating                              | Capacity [Min. - Rated - Max.]    | kW  | 0.9 - 4.0 - 5.0    | 1.1 - 5.9 - 7.2    | 0.9 - 6.9 - 8.0    | 0.9 - 8.1 - 10.4   |         |
|                                      | Total Input [Min. - Rated - Max.] | kW  | 0.72 - 1.10 - 1.27 | 1.20 - 1.84 - 2.12 | 1.59 - 2.45 - 2.82 | 0.74 - 2.36 - 3.84 |         |
|                                      | COP                               |   | 3.64               | 3.21               | 2.82               | 3.43               |         |
|                                      | Running Current [Rated]           | A   | 5.2                | 8.5                | 10.4               | 10.5               |         |
|                                      | Sound Pressure Level              | IN [Lo - Hi]                                  | dB(A)              | 30 - 35            | 31 - 39            | 32 - 43            | 32 - 43 |
|                                      |                                   | OUT (PWL)                                     | dB(A)              | 48 (61)            | 55 (68)            | 55 (68)            | 55 (68) |
| Air Volume (IN) [Lo - Hi]            | I/S                               | 167 - 217                                     | 200 - 283          | 200 - 333          | 200 - 333          |                    |         |
| Starting Current                     | A                                 | 4.75  | 6.75               | 9.75               | 10.30              |                    |         |
| Max. Running Current                 | A                                 | 9.18  | 16                 | 16                 | 16                 |                    |         |
| Indoor                               | Input [Rated]                     | W   | 60                 | 80                 | 100                | 130                |         |
|                                      | Dimensions [H x W x D]            | mm  | 270 x 1,100 x 700  | 270 x 1,100 x 700  | 270 x 1,100 x 700  | 270 x 1,100 x 700  |         |
|                                      | Weight                            | kg  | 33.5               | 33.5               | 33.5               | 35                 |         |
|                                      | Static Pressure                   | Pa  | Std:30, Max:50     | Std:30, Max:50     | Std:30, Max:50     | Std:30, Max:50     |         |
| Outdoor                              | Dimensions [H x W x D]            | mm  | 550 x 800 x 285    | 850 x 840 x 330    | 850 x 840 x 330    | 850 x 840 x 330    |         |
|                                      | Weight                            | kg  | 37                 | 53                 | 53                 | 58                 |         |
|                                      | Breaker Size                      | A   | 10                 | 20                 | 20                 | 20                 |         |
| Ext. Piping                          | Diameter (Gas / Liquid)           | mm  | 9.52 / 6.35        | 12.7 / 6.35        | 15.88 / 6.35       | 15.88 / 9.52       |         |
|                                      | Max. Length / Height              | m   | 20 / 12            |                    | 30 / 15            |                    |         |
| Guaranteed Operating Range [Outdoor] | Cooling                           | °C  | -10 ~ 46           | -10 ~ 43           | -10 ~ 43           | -10 ~ 43           |         |
|                                      | Heating                           | °C  |                    |                    | -10 ~ 24           |                    |         |